

VENUE HIRE PACK



Scale

1/20



WELCOME TO THE HOLY BISCUIT...

The Holy Biscuit is the newest addition to The Biscuit Factory's growing family... located in a refurbished Methodist Church, this little sister space provides an alternative venue for exhibitions and events and loves nothing better than supporting the local community by providing a platform for cultural and creative activities. Located opposite The Biscuit Factory in Shieldfield, Newcastle, The Holy Biscuit is 5 minutes walk from Manors and Jesmond metro stations and with parking for up to 40 cars, is easily accessible. With kitchen facilities catering for parties is simple, with full wi-fi throughout the building meetings are easier and with an on-hand events co-ordinator your event is stress free.



entrance



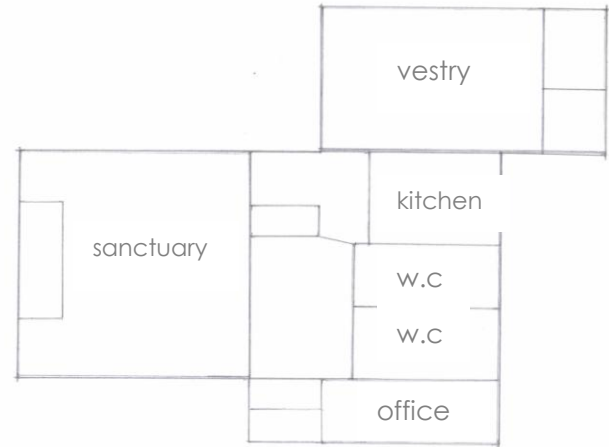
sanctuary



vestry

SPACES TO HIRE...

There are two spaces available to hire at The Holy Biscuit... The Sanctuary or The Vestry or hire both of them for your event. Both rooms have oak floors, air conditioning and are blank canvasses to be made bespoke for your event.



SANCTUARY originally a worship room - is perfect for exhibitions, presentations, performances, conferences, lectures and previews as well as for parties and celebrations.

VESTRY an intimate space this room is ideal for exhibitions, creative workshops, meetings...

HIRE RATES...

SANCTUARY... Capacities | Theatre style: 80 | Cabaret style: 60 | Standing: 100 | Prices from £50 per day | £250 per week | longer hires available

VESTRY... Capacities | Theatre style: 60 | Cabaret style: 50 | Standing: 80 | Prices from £35 per day | £195 per week | longer hires available

SANCTUARY AND VESTRY ... you can hire both rooms | Prices from £70 per day | £395 per week | longer hires available

Wi-fi | air conditioning | kitchen facilities | parking for up to 40 cars | 5 minutes from city centre | catering available |

Contact...

The Holy Biscuit is located opposite The Biscuit Factory.

1 Clarence Street
Newcastle
NE2 1YH

events@thebiscuitfactory.com

0191 261 1103

Contact Rachel Brown for more information

